

# SPOTLIGHT ON QUEEST MOUNTAIN RIDING AREA

Queest Mountain, often pronounced “Quest”, is a riding area that has something for everyone. This diverse riding area has meadows, tree riding and open alpine sections to explore. The backcountry trail follows a ridge line with honey holes on either side – some are obvious, some are hidden gems.

Due to logging activities, the EVSC is unable to groom the established trail to the riding area using the Queest FSR. Fortunately, there is a secondary access to the area, accessed through Malakwa on Queest Mountain Road (50°56'17.9"N 118°48'45.7"W).

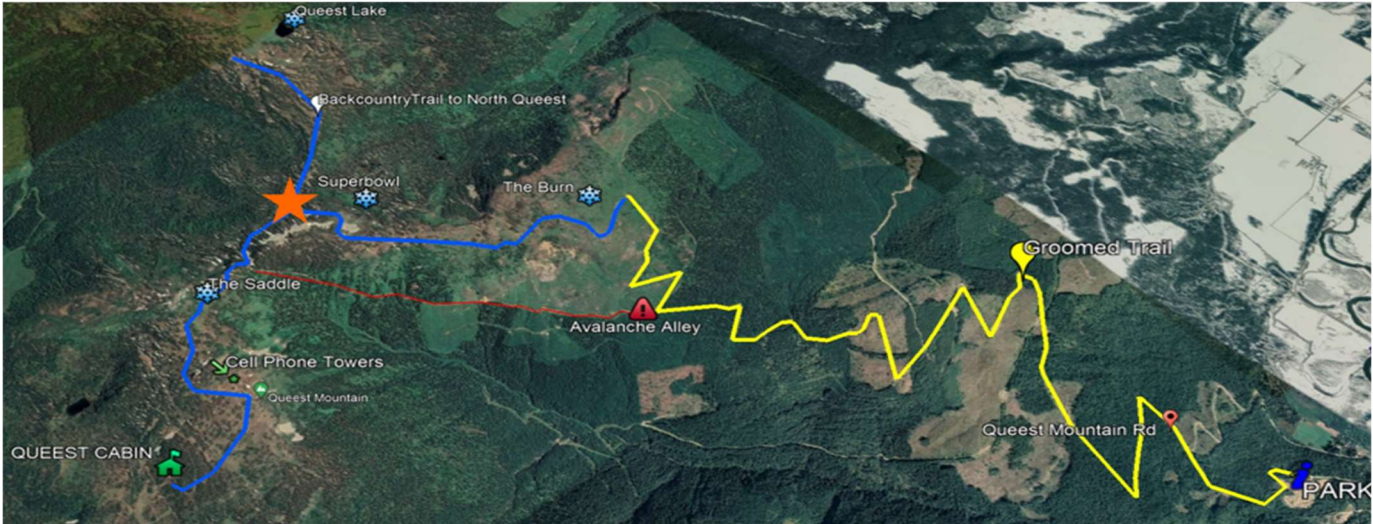


**THE NEW STAGING AREA IS LOCATED IN MALAKWA ON QUEEST MOUNTAIN ROAD.**

**WHEN YOU REACH THE 3 WAY INTERSECTION ON SOMMERVILLE HUSTED ROAD, YOU WILL SEE SIGNS DIRECTING YOU TO THE PARKING AREA.**

**TRAILERS WELCOME!**

Volunteers and club employees have been working tirelessly since the fall and we are excited to announce that we have gotten a groomer to the alpine! This new access is Sicamous’s shortest trail, dropping our riders off in the backcountry after only 14k. Though the groomed trail does not continue to the cabin at this time, there is a backcountry trail and signage on the mountain for riders to follow. It is recommended that you review the map and riding information on [sledsicamous.com](http://sledsicamous.com).



This riding area has terrain for all skill levels and is a favorite destination for backcountry sledders, snow bikes, and skiers. Make your next trip a quest at Queest and check out this amazing riding area!



**THE NEW ACCESS WILL BRING YOU TO THE ESTABLISHED BACK COUNTRY TRAIL, CONNECTING BETWEEN THE SADDLE AND SUPERBOWL.**

**FROM THE CONNECTION POINT, RIDERS CAN HEAD LEFT TO THE CABIN OR RIGHT INTO RIDING TERRAIN.**

**CABIN: 50°59'08.6"N 118°52'54.1"W**

**PLEASE NOTE THE CARIBOU CLOSURE AREA IS STILL IN EFFECT. ANY SITINGS SHOULD BE REPORTED TO SLED SICAMOUS.**